



Science

Animals Including Humans

Digestive System Parts

A stylized, cartoonish illustration of the human digestive system. The background is a warm, orange-to-red gradient. The digestive organs are depicted in various shades of brown, tan, and red, with thick black outlines. The stomach is a large, rounded organ in the center. Below it is the small intestine, shown as a long, coiled tube. The large intestine is a larger, more rectangular organ with a distinct haustra pattern. The liver is a large, dark brown organ on the right side. The pancreas is a smaller, lighter brown organ on the left side. The esophagus is a long, thin tube running down the center. The mouth and throat are visible at the top. The overall style is simple and educational.

twinkl

Aim

- I can identify and name parts of the human digestive system.

Success Criteria

- I can name parts of the digestive system.
- I can identify parts of the digestive system.
- I can construct the digestive system.

Digestive System



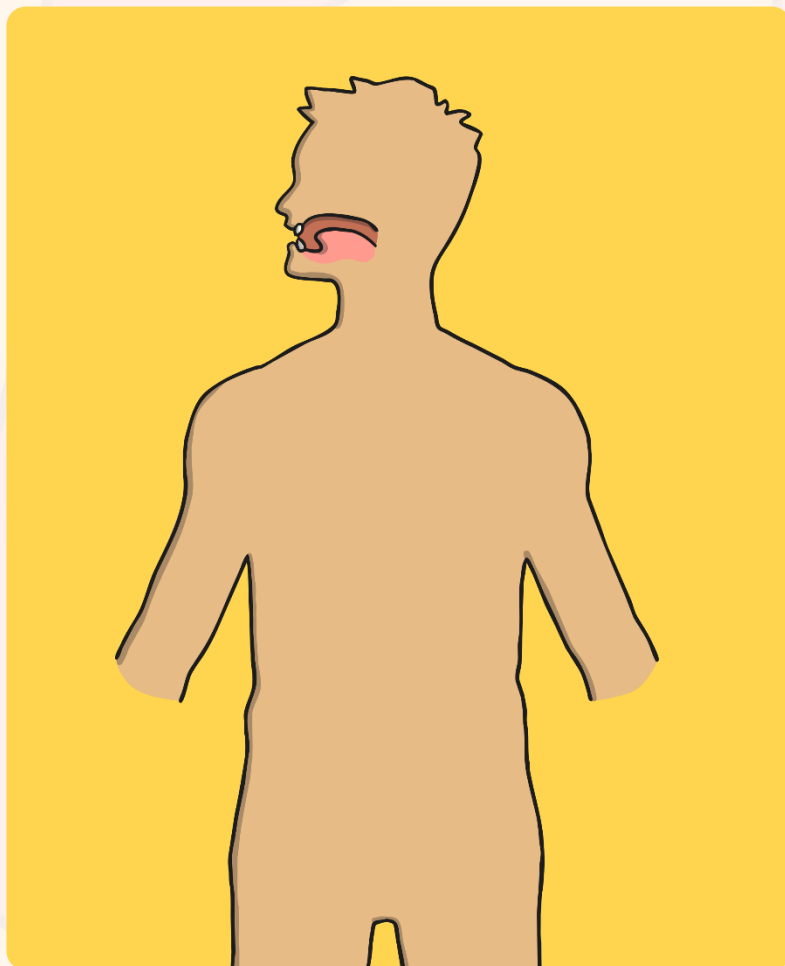
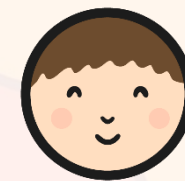
Humans digest food. They have a digestive system that allows them to do this.

What do you think digest/digestive system mean?

Click here for
a definition of
digest

Click here for
a definition of
**digestive
system**

Digestive System Parts



You are now going to draw and label the body parts that you think are part of the digestive system!

Think about the following to help you:

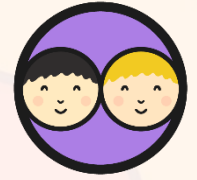
How do humans digest food?

How does food travel through the body?

What parts of the body are involved?

(Hint: it's not just the ones on the outside that you can see!)

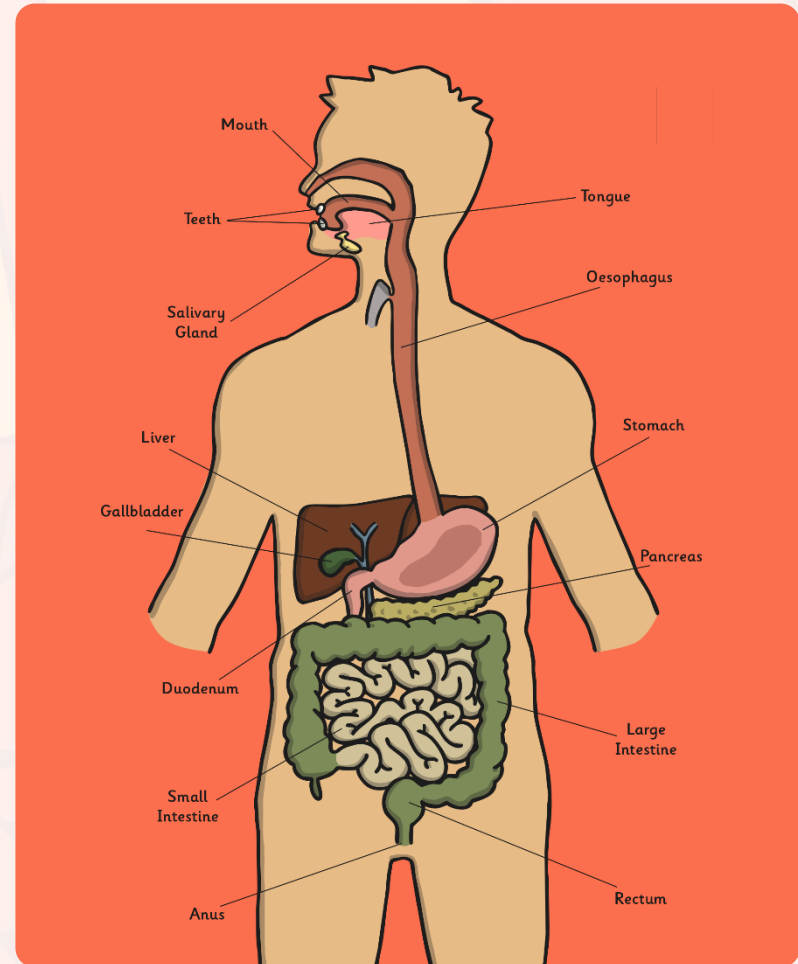
Digestive System Parts



Swap your sheet with your partner.

Peer mark their work:

- Tick any body parts that were correct and cross any that were incorrect.
- Swap back with your partner.
- Were there any obvious body parts you missed out?
- Were there any body parts that you were surprised by?



Identifying and Naming



You will work in small groups to help create our class display!

Each group will be given a different part of the digestive system which they will add to the display.



You will be assigned one of the following roles:

- 1) **Identifier** (Identify the part correctly).
- 2) **Namer** (Name the part correctly)
- 3) **Displayer** (Add the body part and name label to the body outline on display)

Aim



- I can identify and name parts of the human digestive system.

Success Criteria

- I can name parts of the digestive system.
- I can identify parts of the digestive system.
- I can construct the digestive system.

