

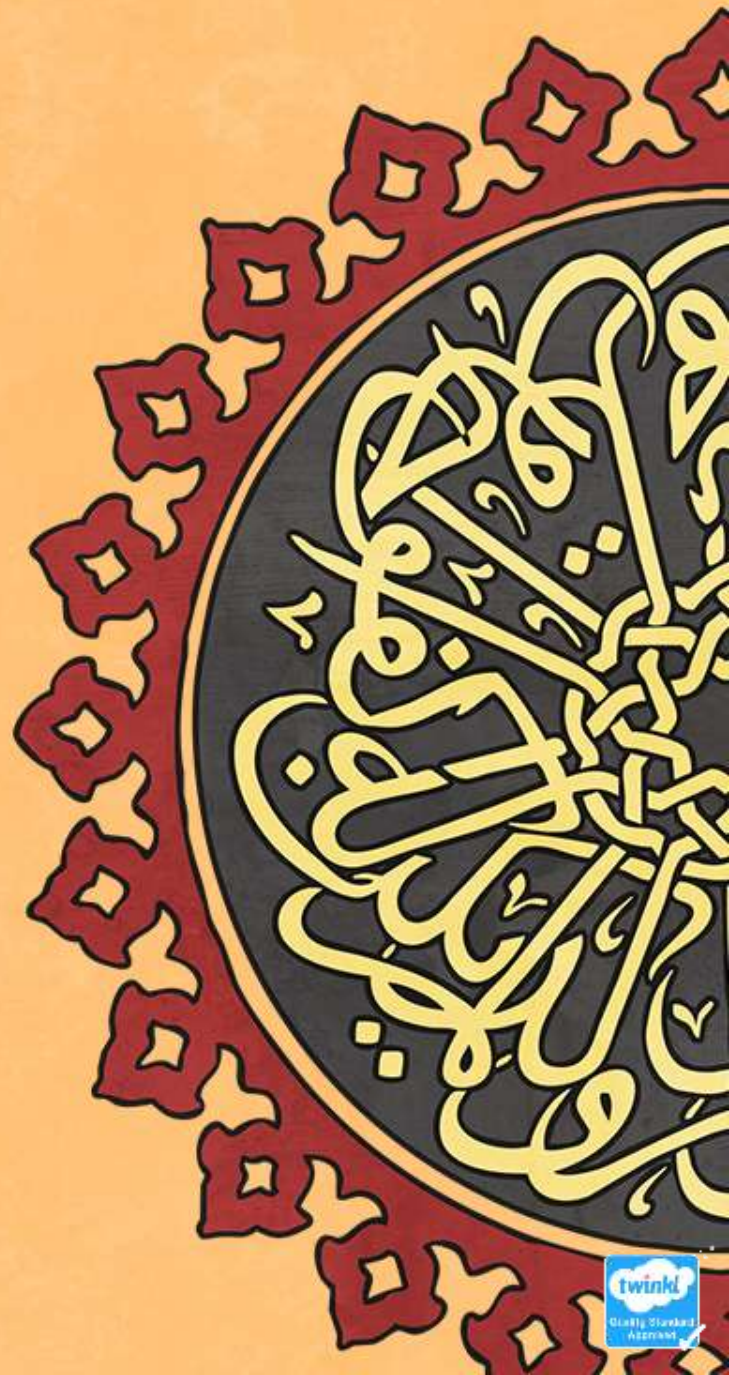


# RE

## Worship



# Art



# Aim

- To compare expressions of worship in art.

# Success Criteria

- I can discuss how a piece of art can be an expression of worship.
- I can share how a piece of art makes me feel.
- I can create my own artwork using colour or pattern, inspired by what I know about worship.

# How Do People Worship?



Discuss with your partner:

What is worship?

How do people worship differently?

Worshipping is a way of expressing that something has 'worth'. To religious believers, God is worth more than anything else and they worship Him to demonstrate this.

People worship in different ways, using music and prayer.



# Expression through Art



How is art used as a form of expression?

- to convey or evoke emotion;
- to share ideas on a certain topic;
- to represent something that inspires;
- to record an event or other significant happening or person.

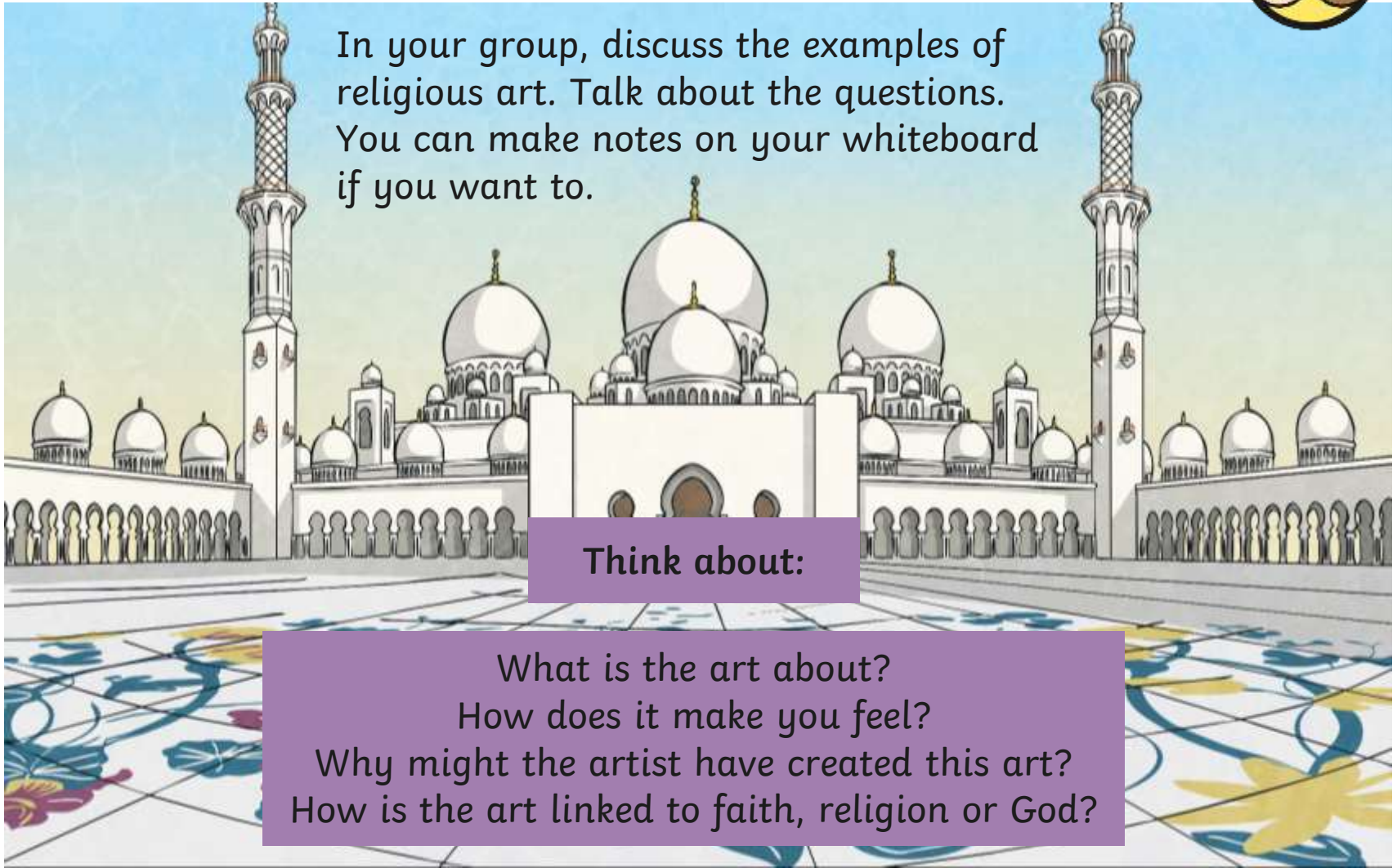
How could religious believers use art as a form of worship?

- to convey their emotions about their religion;
- to represent how their faith inspires them;
- to respond to a challenge or story in their faith;
- to be themselves as they focus on God or similar important ideas.

# Religious Art



In your group, discuss the examples of religious art. Talk about the questions. You can make notes on your whiteboard if you want to.



**Think about:**

What is the art about?  
How does it make you feel?  
Why might the artist have created this art?  
How is the art linked to faith, religion or God?

# Colour and Shape



Colour is used in some religions to symbolise different things.

In Christianity, colours are used in churches at different times of the year as reminders of important parts of the Christian faith.



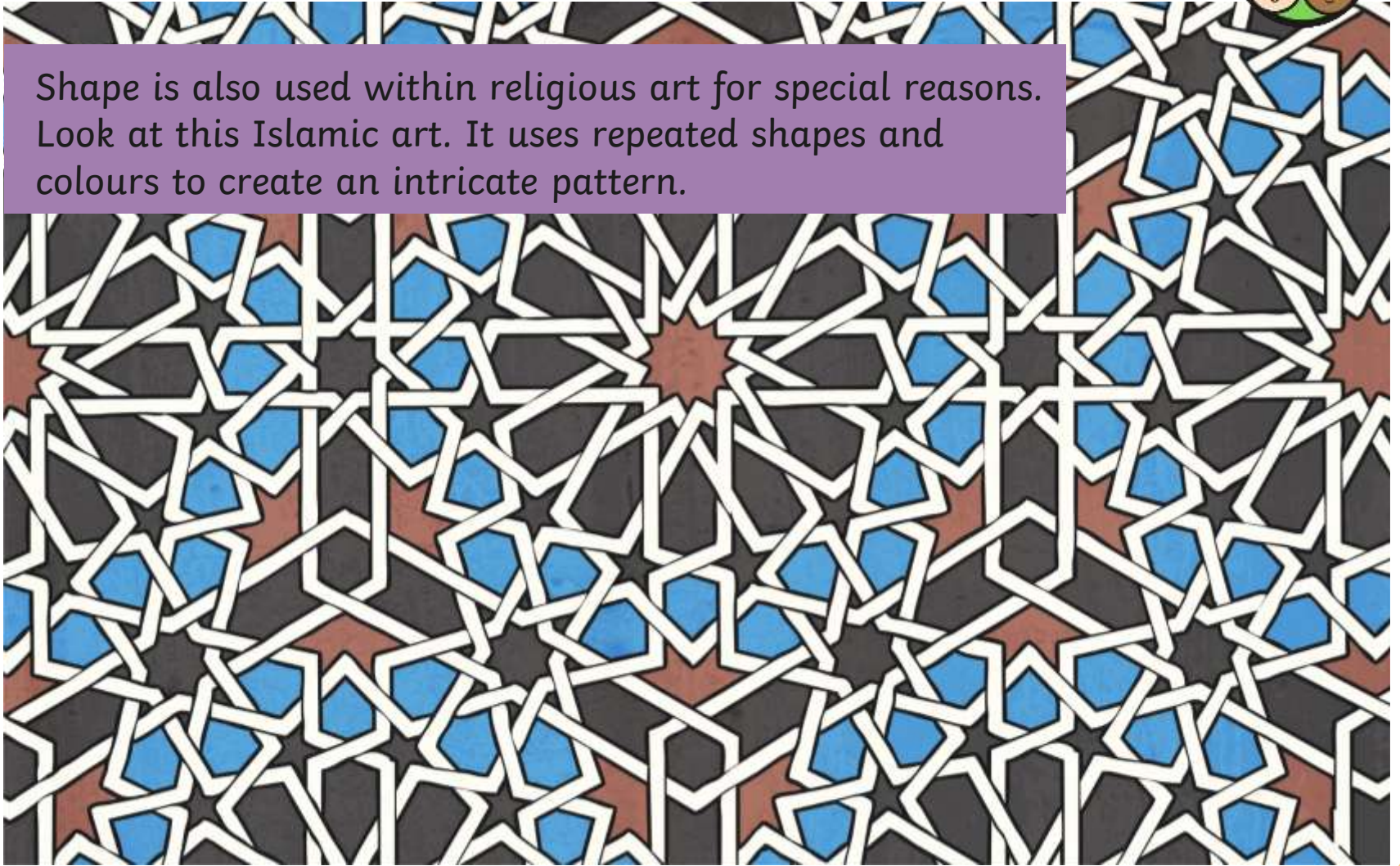
## **White:**

A symbol of purity, innocence and holiness, often used for Christmas and Easter.

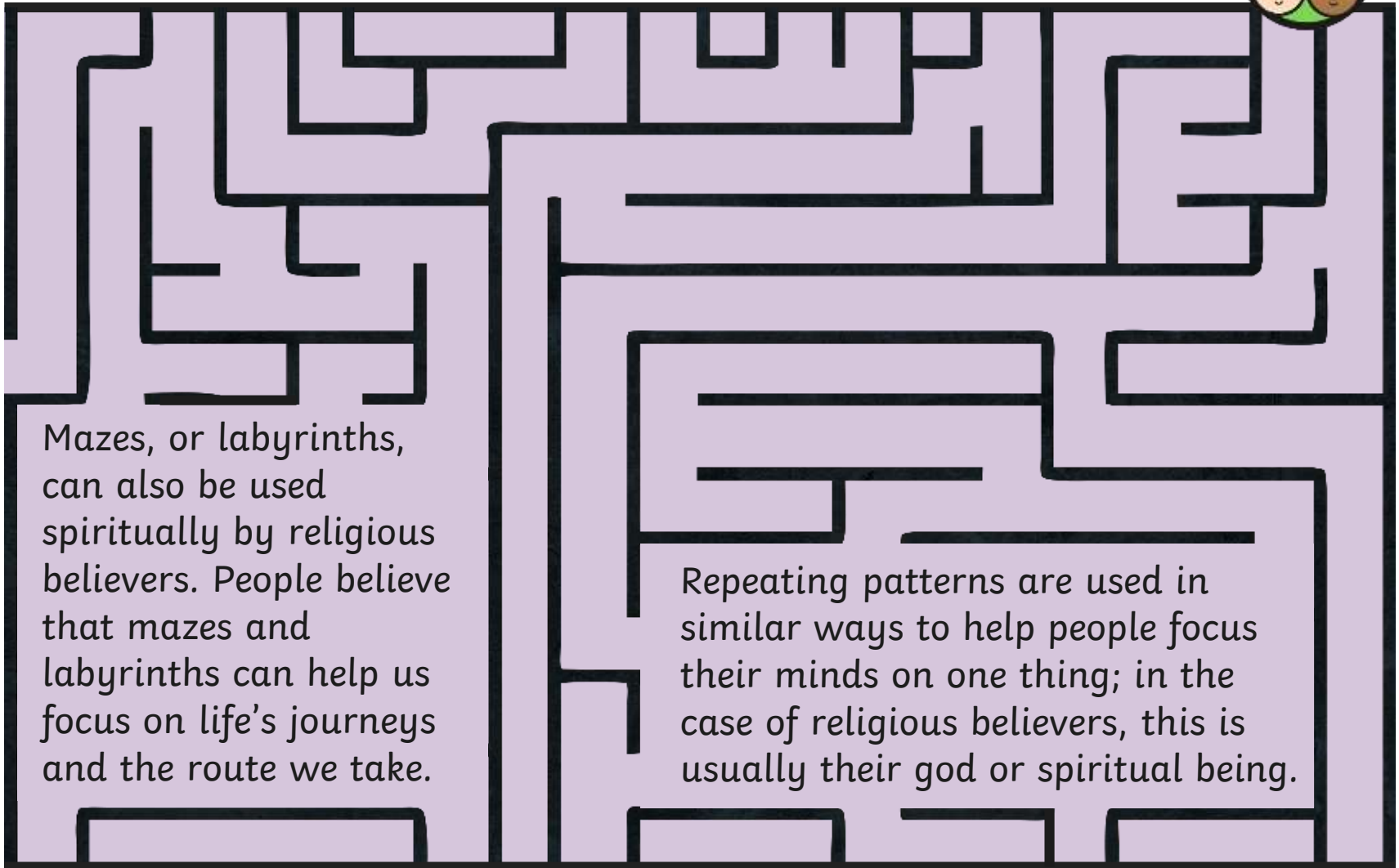
# Colour and Shape



Shape is also used within religious art for special reasons. Look at this Islamic art. It uses repeated shapes and colours to create an intricate pattern.



# Colour and Shape



Mazes, or labyrinths, can also be used spiritually by religious believers. People believe that mazes and labyrinths can help us focus on life's journeys and the route we take.

Repeating patterns are used in similar ways to help people focus their minds on one thing; in the case of religious believers, this is usually their god or spiritual being.

# You Are an Artist!



Now it's your turn!

Use what you know about religious art to create your own inspirational masterpiece.

Will your art remind people of God or faith?

Will your art help people focus on an important thought or idea?

Will you use symbolism in your art?



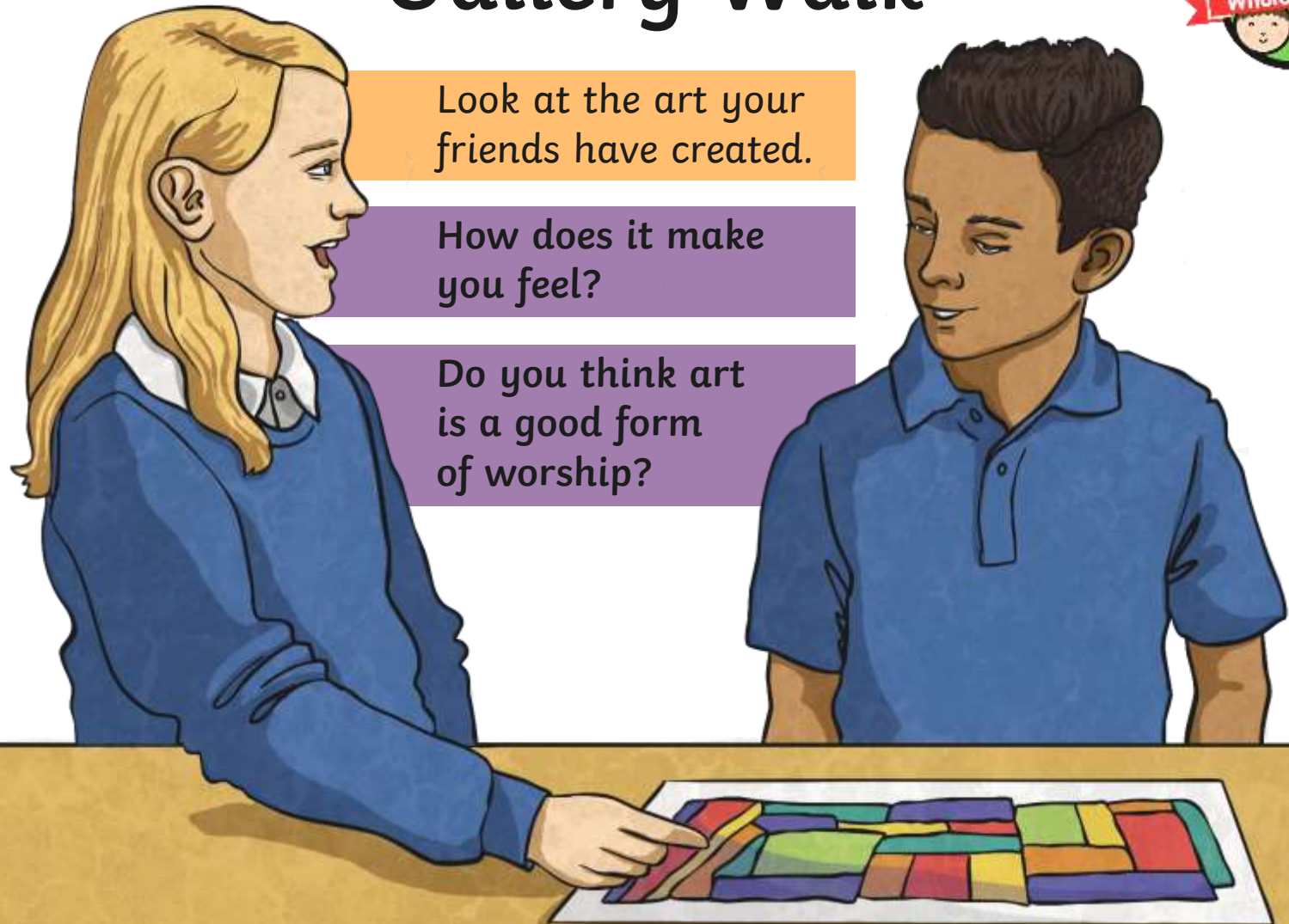
# Gallery Walk



Look at the art your friends have created.

How does it make you feel?

Do you think art is a good form of worship?



# Aim



- To compare expressions of worship in art.

# Success Criteria

- I can discuss how a piece of art can be an expression of worship.
- I can share how a piece of art makes me feel.
- I can create my own artwork using colour or pattern, inspired by what I know about worship.

